

**PLEASE WEAR A MASK  
IN OUR FACILITY**

**MASKS ARE  
REQUIRED AT  
ALL TIMES**



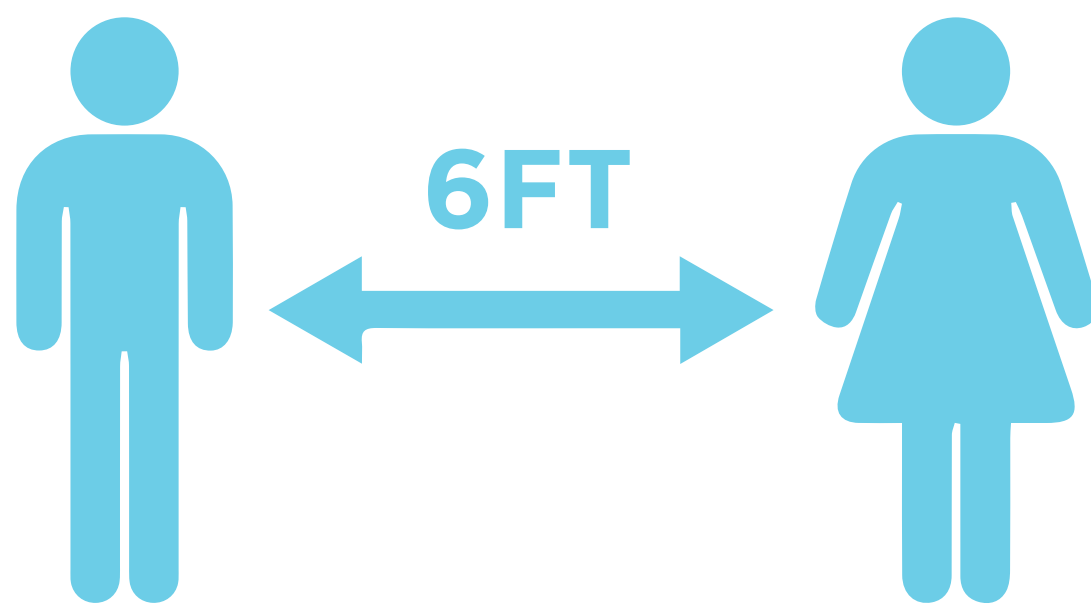


**MASKS ARE  
REQUIRED  
AT ALL TIMES**



**SOCIAL  
DISTANCE**

MAINTAIN 6 FOOT  
DISTANCE



**WASH YOUR  
HANDS**

PRACTICE PROPER  
HYGIENE



## **EVENT PARTICIPANTS:**

**Are you experiencing any of the following symptoms?**

- Shortness of Breath
- Difficulty Breathing
- Cough
- Fever
- Headache
- Chills
- Sore Throat
- Loss of Taste or Smell
- Body Aches
- Nasal Congestion
- Runny Nose
- Diarrhea
- Fatigue

**By entering the arena, you are confirming that you have NOT experienced any of the symptoms outlined above within the past 10 days (NOT attributed to another health condition)**

**If you have experienced any symptoms, have been in close contact in the last 14 days with someone diagnosed with Covid-19, currently awaiting results of a recent Covid-19 test OR had a positive Covid-19 test in the past 10 days, contact Medical Personnel.**

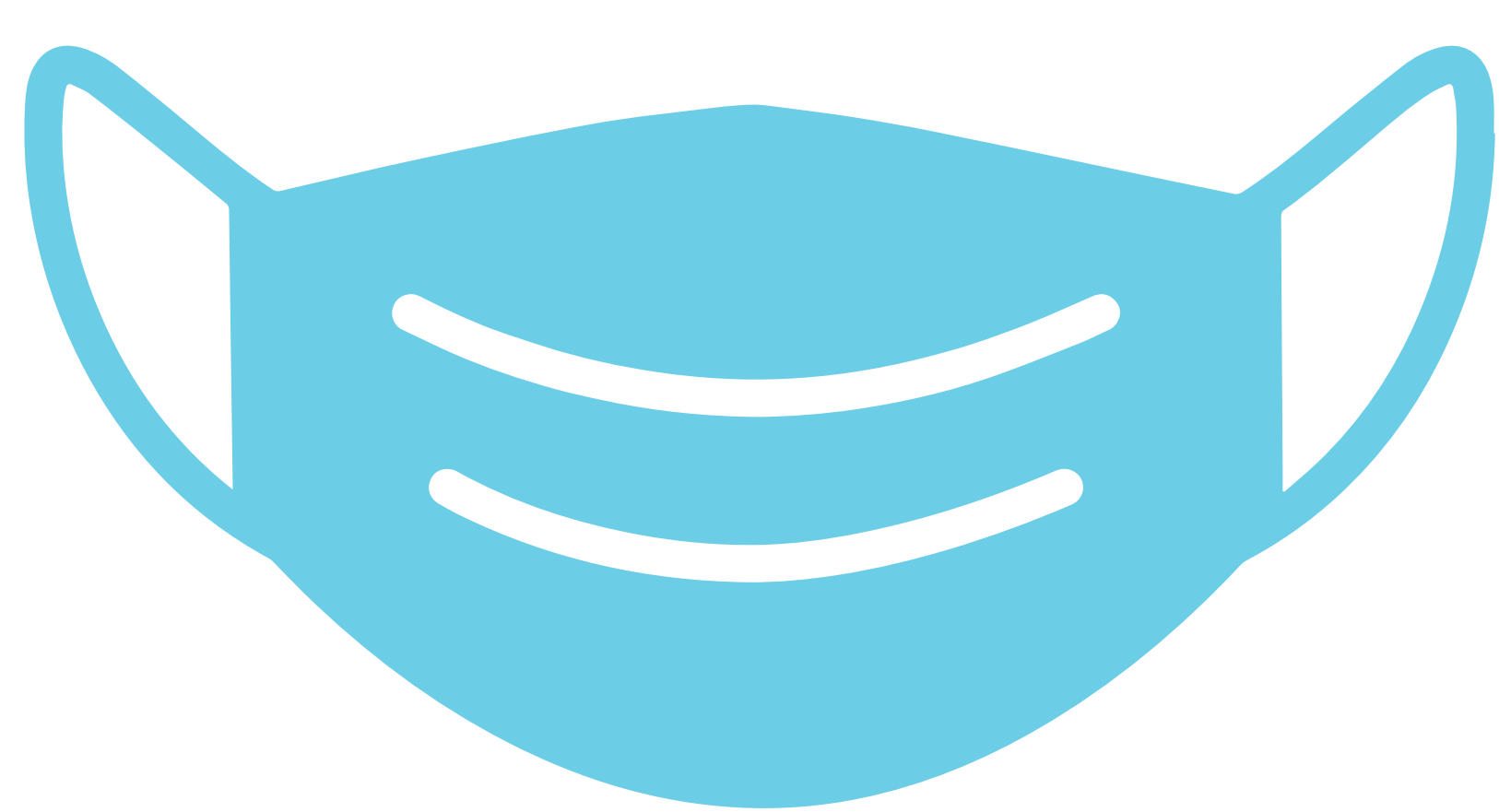
# **THANK YOU**





# WELCOME

WE'RE GLAD YOU'RE HERE

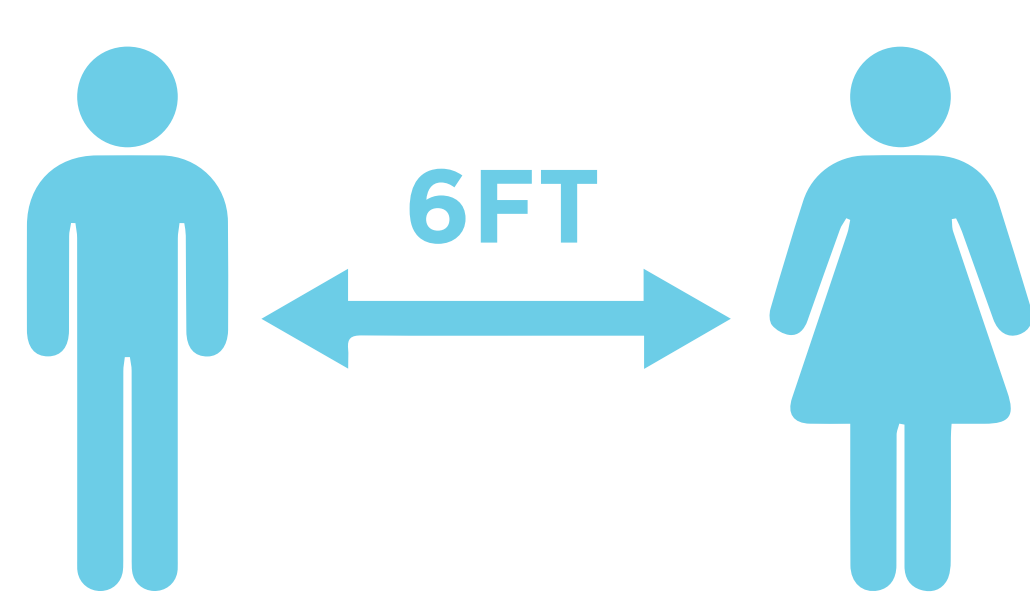


## MASKS ARE REQUIRED AT ALL TIMES

Anyone exhibiting symptoms of COVID-19 or who has been in close contact with a suspected or confirmed COVID-19 case within the last 14 days should NOT enter the arena.

### DO NOT ENTER IF YOU ARE EXPERIENCING:

- Shortness of Breath
- Difficulty Breathing
- Cough
- Fever
- Headache
- Chills
- Sore Throat
- Loss of Taste or Smell
- Body Aches
- Nasal Congestion
- Runny Nose
- Diarrhea
- Fatigue



**MAINTAIN 6 FT  
DISTANCE  
FROM OTHERS**



**WASH AND  
SANITIZE  
HANDS OFTEN**



**COVER  
COUGHS AND  
SNEEZES**

# THANK YOU



**YOUR  
MASK IS  
YOUR FRIEND**



**MASKS ARE REQUIRED AT ALL TIMES**



**HAVE YOU  
WASHED YOUR  
HANDS?**



**WASH AND SANITIZE HANDS OFTEN**

